

Progress Corticon Integration with Progress OpenEdge and BPM

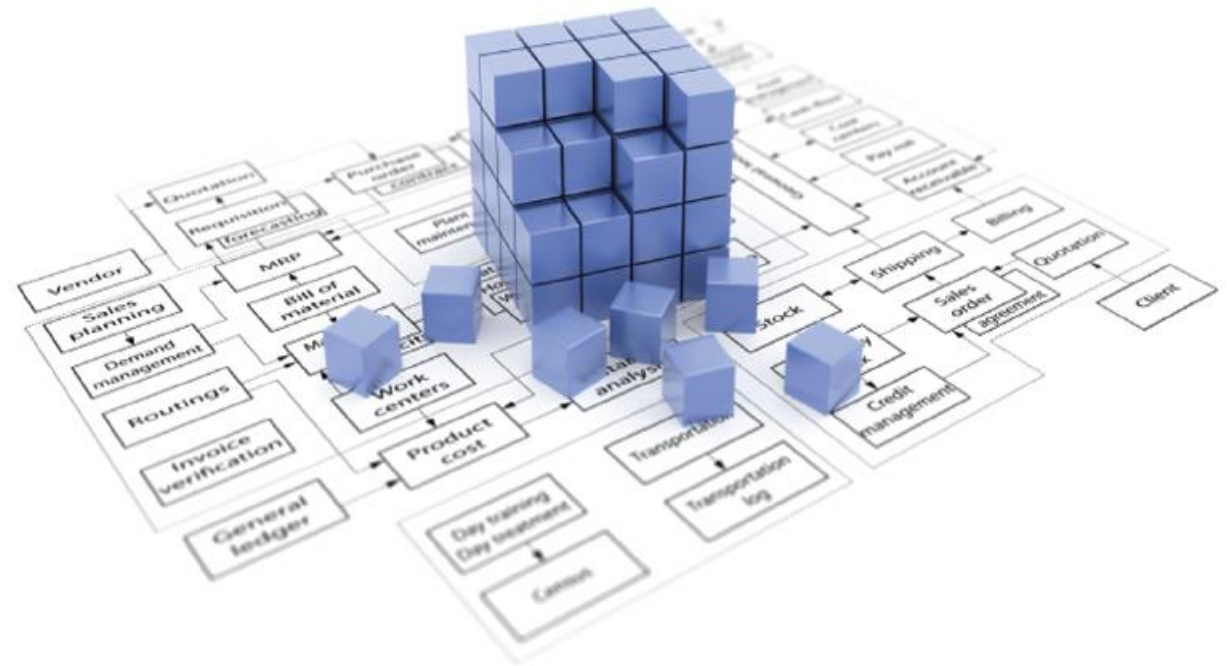
Ankur Goyal – Corticon Product Manager

Ken Smyth – Sales System Engineer

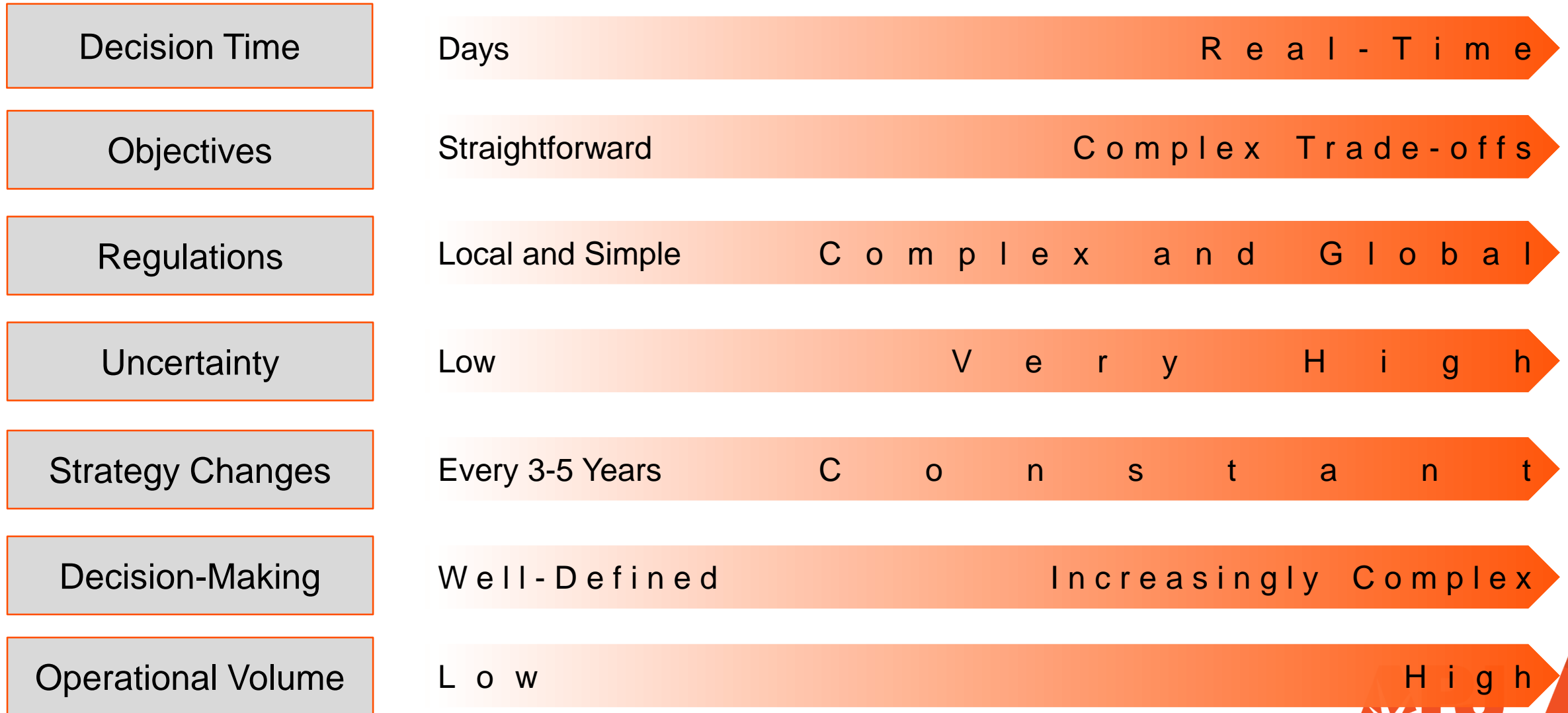


Agenda

- Changing Complexities of the Business
- Ruling Processes or Processing Rules?
- Integration Flow
- Customer Successes
- Q&A



Changing Complexities of Business



Responding to Increasing Complexities

Business Process Management Delivers...

- Manage uncertainty
- Ensure compliance
- Improve agility
- Cut costs
- Resource efficiency
- Core application value
- Process simulation and impact analysis
- Run processes exactly as documented
- Easier workflow and process changes
- Avoid coding changes to multiple applications
- Measure and adapt human workflow
- Share processes across the enterprise

Responding to Increasing Complexities

Enhance Process Management

- Manage uncertainty
- Ensure compliance
- Improve agility
- Cut costs
- Resource efficiency
- Core application value
- Predict and test the future
- Demonstrate compliance in every action
- Give business user control with stable processes
- Lower maintenance costs with fewer manual reviews
- Focus people on higher value tasks
- Modularize and modernize

Use Processes with Decisions

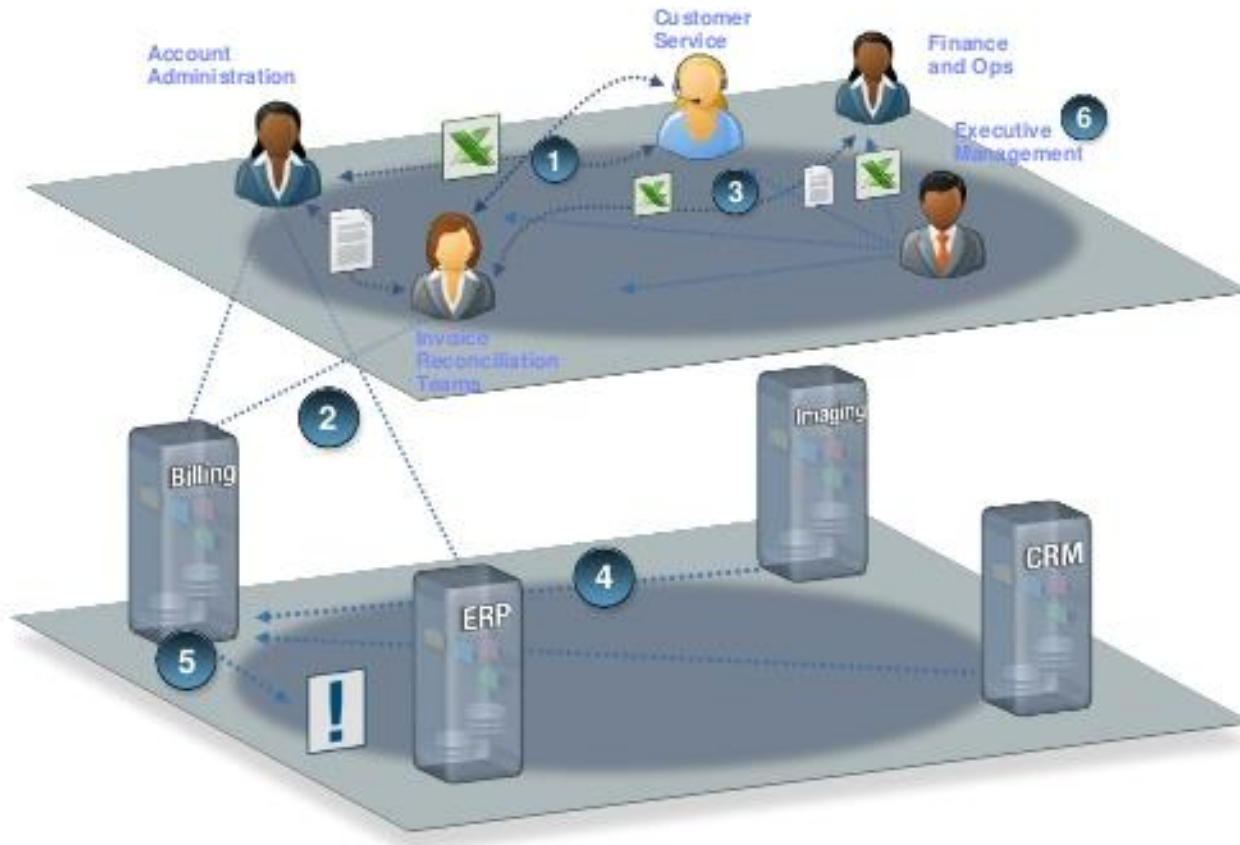
Process

- Business users determine ***sequence***
- Based on business policies and services
- Rapidly model, ***assemble***, deploy, govern services
- Reuse business ***processes*** and ***services***
- End-to-end visibility of ***business processes***

Decision

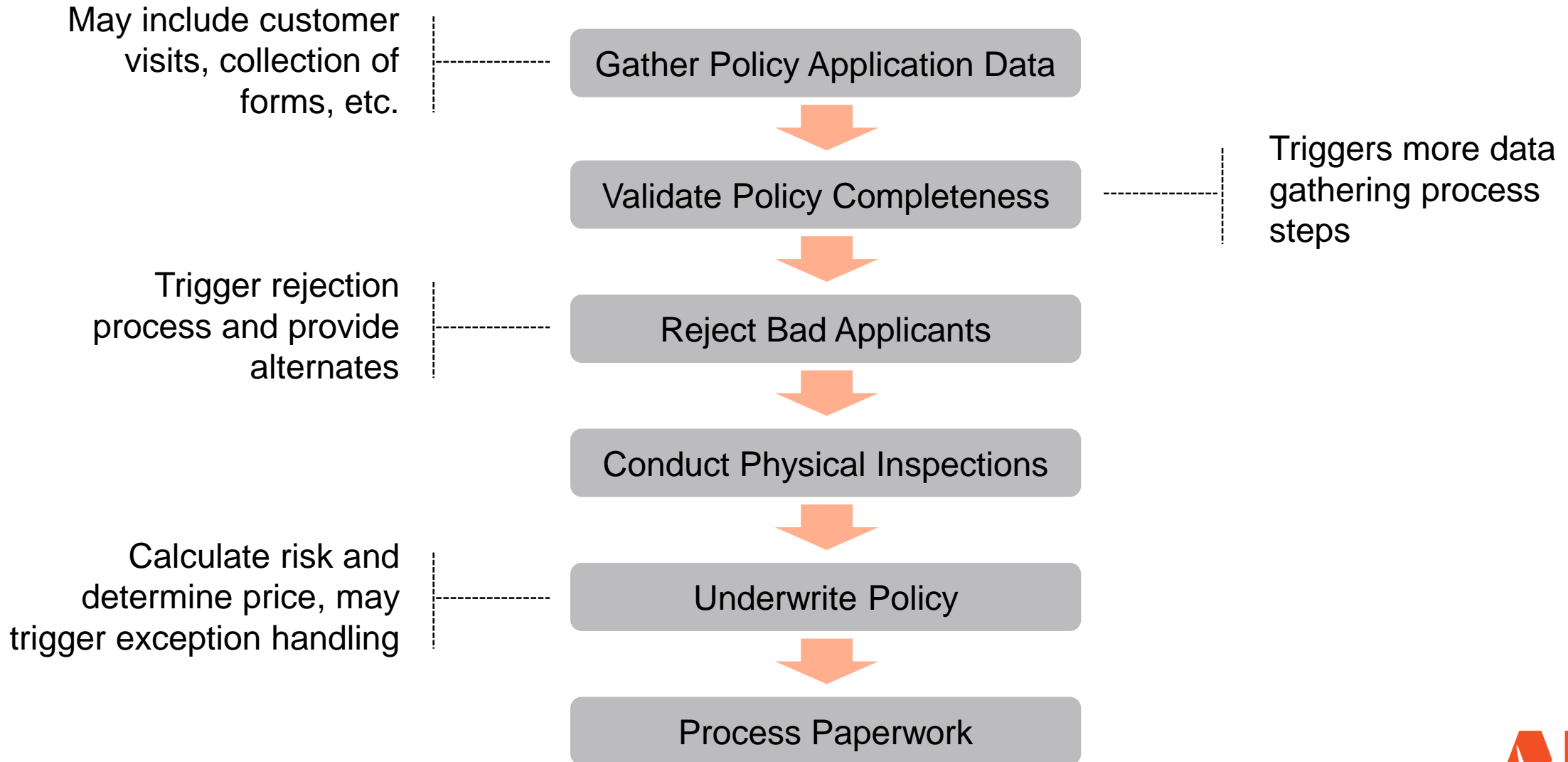
- Business users determine ***actions***
- Based on regulations, policies, expertise
- Rapidly define and evolve the ***behavior*** of a service
- Reuse business rules ***across services***
- Visibility ***within*** critical business services

Typical Process Problems

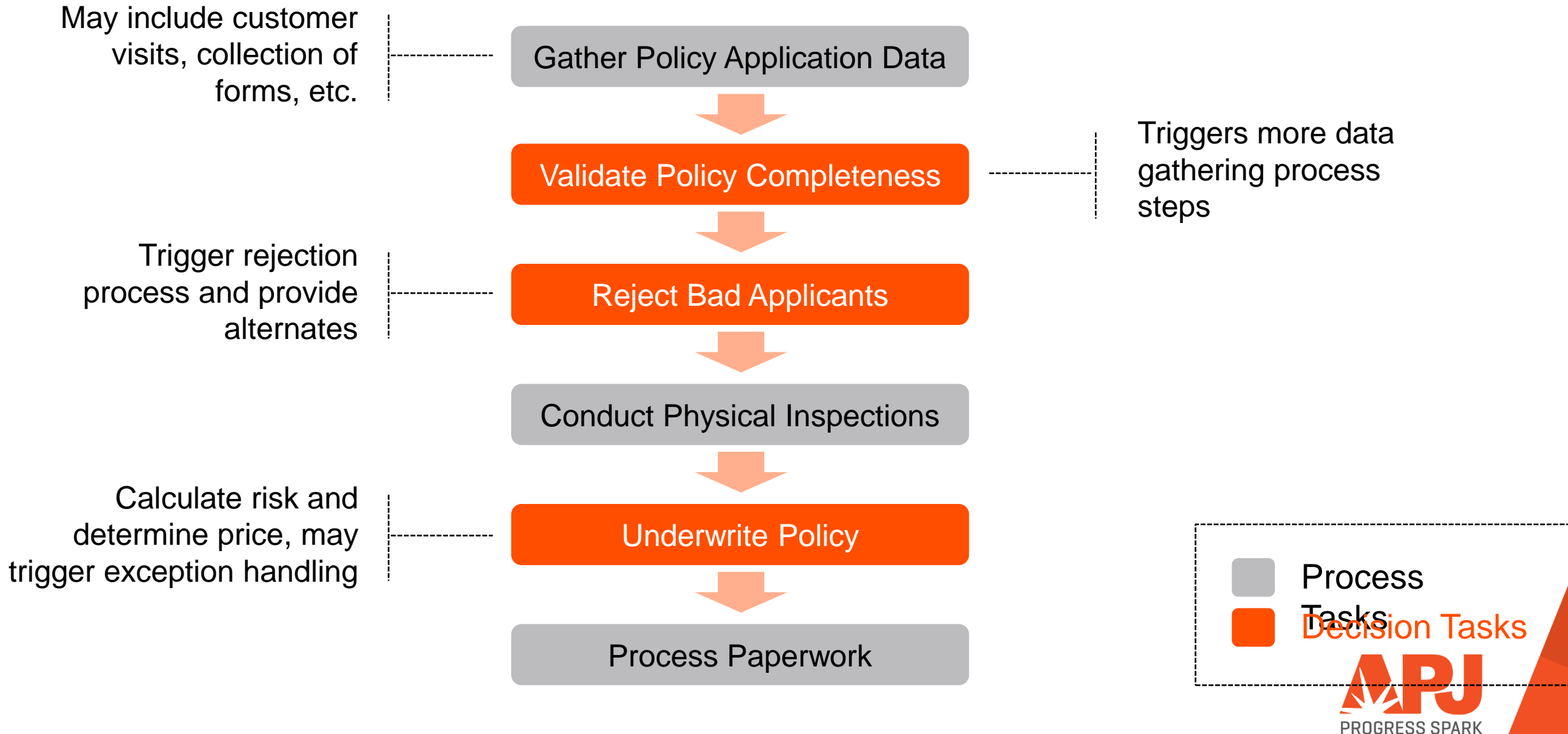


- Unstructured tasks and communication
- Inefficient working environment spans systems
- Inconsistent prioritization
- Incomplete or inaccurate data flow between systems
- Lack of control over system and business events
- Poor visibility into process performance

Insurance Underwriting Example

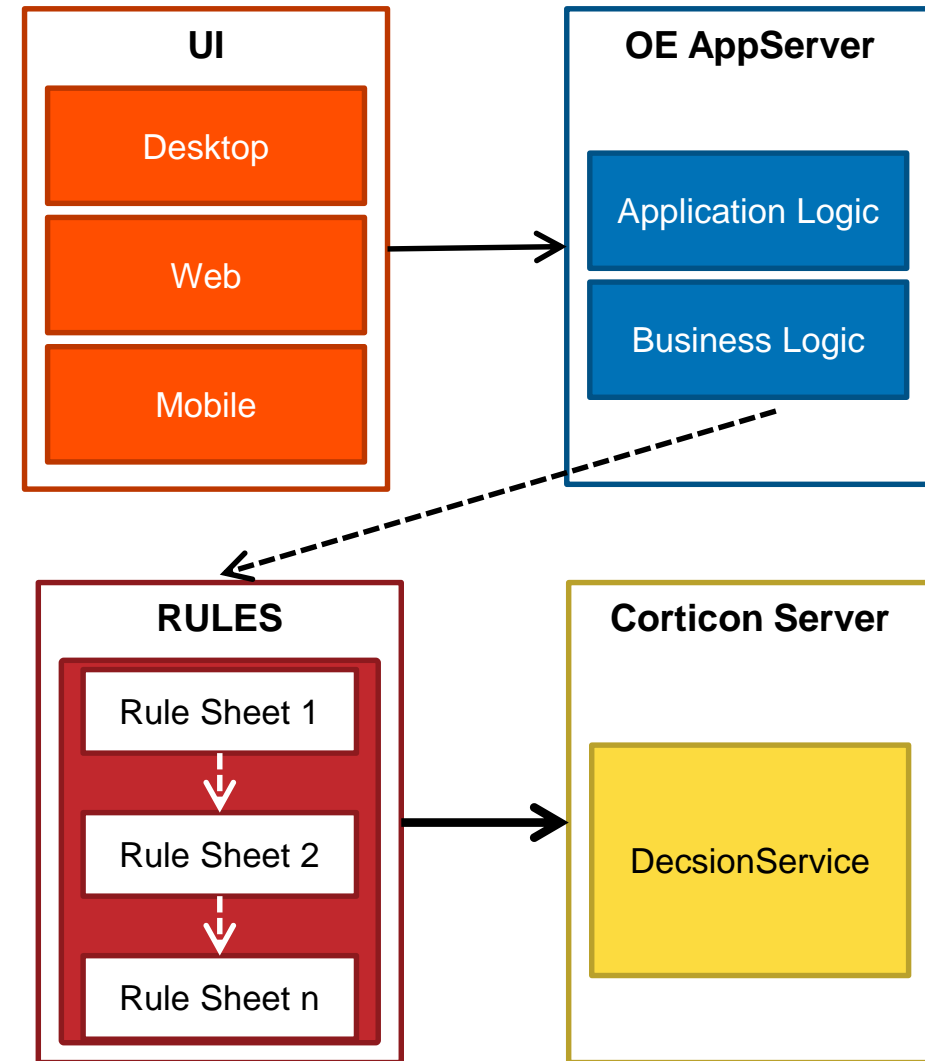


Insurance Underwriting Example



Challenges Encountered if Rules Written in ABL

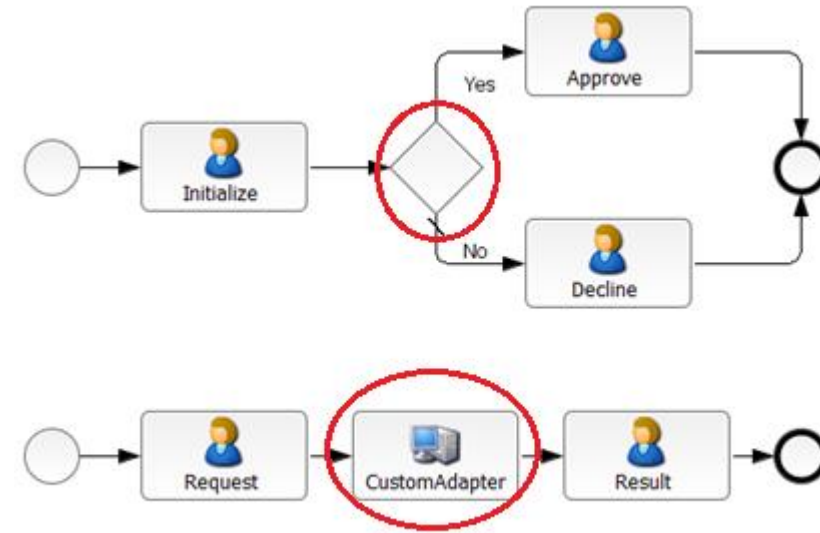
- Ties up valuable ABL development resources
- High maintenance cost and extended release cycles
- Hard to detect rule Ordering errors
- Hard to identify Conflicting rules, Completeness



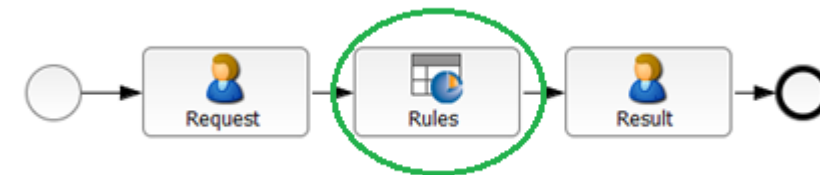
Challenges Encountered if Rules Developed in OpenEdge BPM

- Difficulty in modeling complex rules
- No reusability of rules across different process
- Lack of visibility for rule execution
- Changing the logic results in modification, redeployment

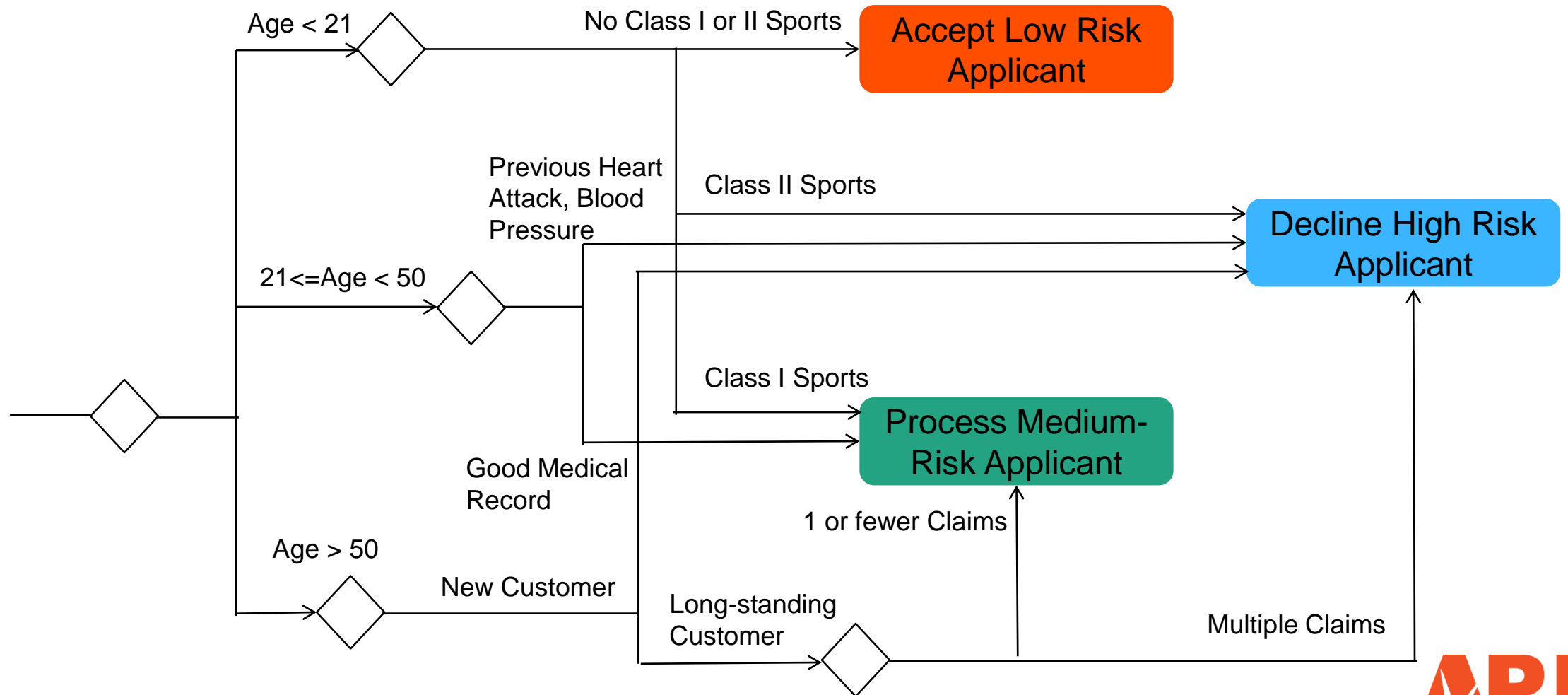
When Used Decisions and CustomAdapter



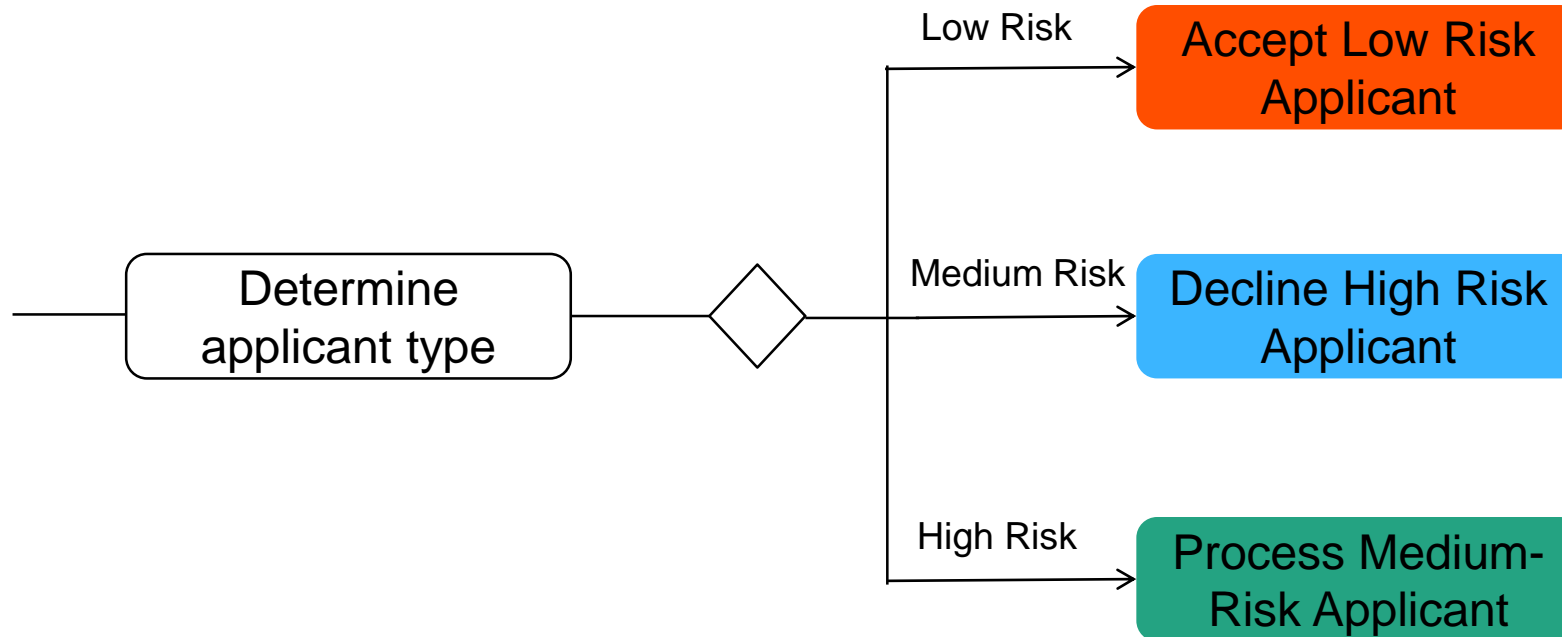
Replaced With Corticon Adapter



Complicated Process Flow



Process Flow Using Decisions



OpenEdge – Corticon

PROGRESS
EXCHANGE 2014

OpenEdge – Corticon

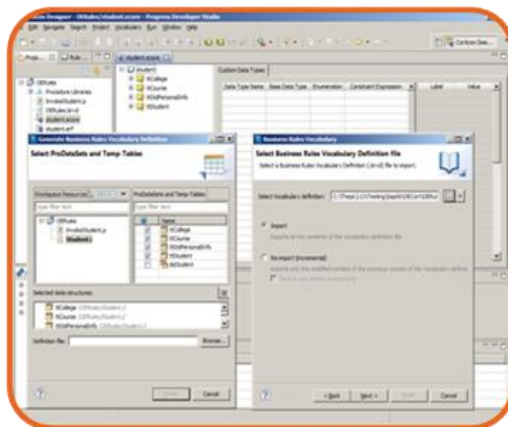
Define Schema

Create Rules

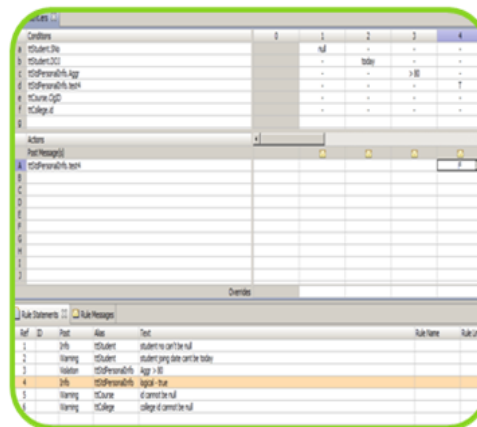
Deploy

Invoke Decision Service

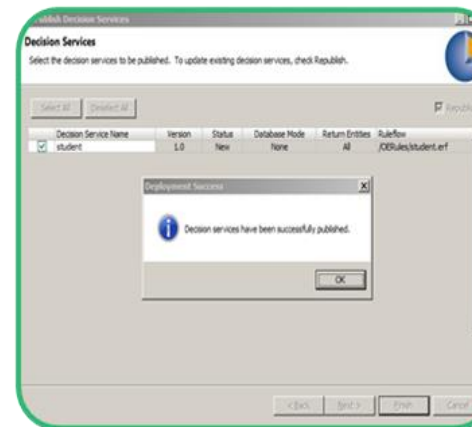
Define Schema
in ABL



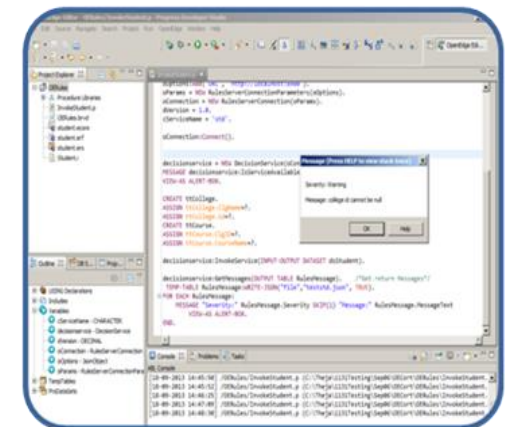
Write business rules
in Corticon



Deploy the rules to
Corticon Server



Invoke Decision
Service from ABL



OpenEdge – Corticon

Define Schema

Create Rules

Deploy

Invoke Decision Service

■ Define ABL Schema

- Temp-Table
- ProDataSet

■ Export Schema

- Export from PDS for OE
- Business Rules Vocabulary Definition(BRVD) file

```
DEFINE TEMP-TABLE Transaction
  FIELD TransactionID AS INTEGER
  FIELD CCNumber AS INT64
  FIELD Name AS CHAR
  FIELD ExpiryDate AS DATE
  FIELD Amount AS DECIMAL
  FIELD Result AS LOGICAL
  FIELD ResMessage AS CHARACTER.

DEFINE TEMP-TABLE CCInfo
  FIELD CCNumber AS INT64
  FIELD HolderName AS CHARACTER
  FIELD ExpiryDate AS DATE
  FIELD Limit AS DECIMAL.

DEFINE DATASET dsCCard FOR CCInfo, Transaction
  DATA-RELATION relation1 FOR CCInfo, Transaction
  RELATION-FIELDS (CCNumber, CCNumber).
```

```
<ns2:table name="CCInfo">
  <ns2:fields>
    <ns2:field name="CCNumber" type="xs:long"/>
    <ns2:field name="HolderName" type="xs:string"/>
    <ns2:field name="ExpiryDate" type="xs:date"/>
    <ns2:field name="Limit" type="xs:decimal"/>
  </ns2:fields>
</ns2:table>
<ns2:table name="Transaction">
  <ns2:fields>
    <ns2:field name="TransactionID" type="xs:int"/>
    <ns2:field name="CCNumber" type="xs:long"/>
    <ns2:field name="Name" type="xs:string"/>
    <ns2:field name="ExpiryDate" type="xs:date"/>
    <ns2:field name="Amount" type="xs:decimal"/>
    <ns2:field name="Result" type="xs:boolean"/>
    <ns2:field name="ResMessage" type="xs:string"/>
  </ns2:fields>
</ns2:table>
```


OpenEdge – Corticon

Define Schema

Create Rules

Deploy

Invoke Decision Service

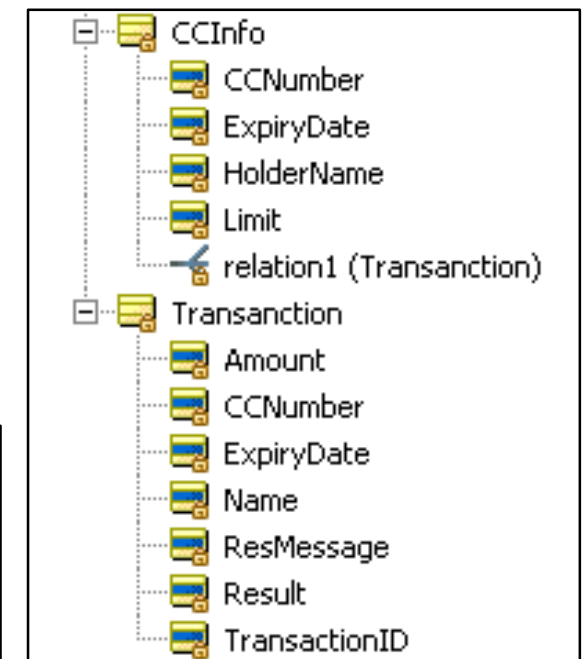
■ Import Schema

- BRVD file -> Vocabulary file
- Temp-Table -> Entity
- Temp-Table Fields -> Entity Attributes

■ Write Rules

- Create Rule Sheet
- Write rules

Conditions	0	1
Transanction.Amount > CCInfo.Limit		T
CCInfo.ExpiryDate < today		-
Transanction.ExpiryDate <> CCInfo.ExpiryDate		-
Transanction.Name		-
Transanction.Name <> CCInfo.HolderName		-
Actions		
Post Message(s)		
Transanction.Result	T	F
Transanction.ResMessage	...	"Limit Exceeded"



OpenEdge – Corticon

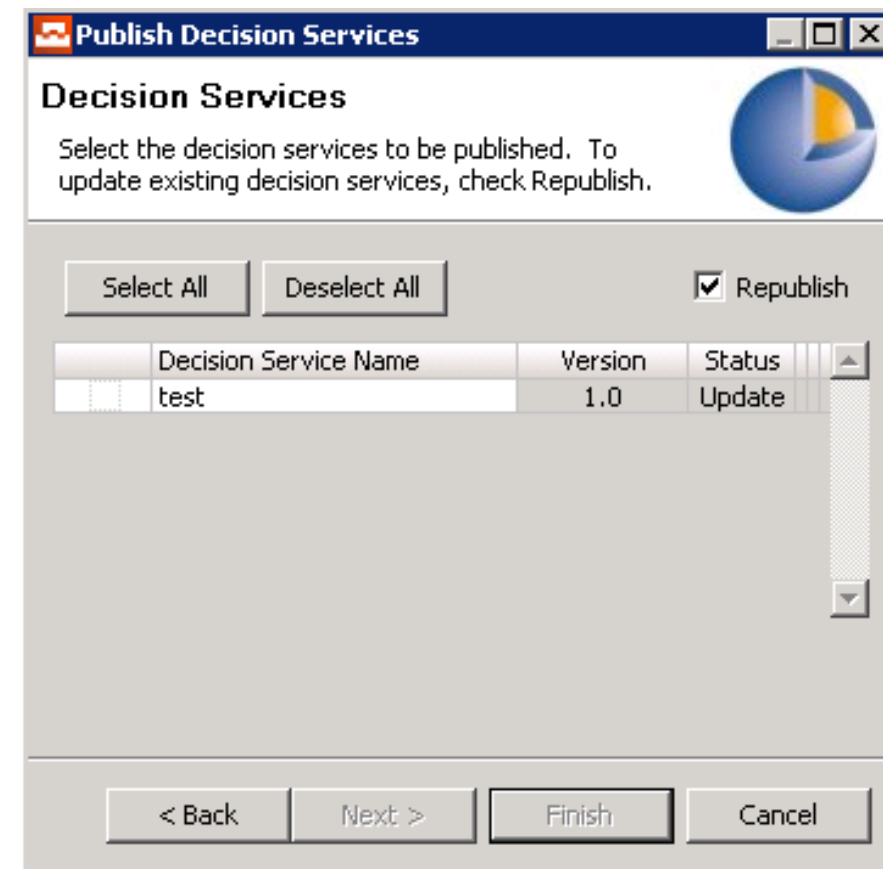
Define Schema

Create Rules

Deploy

Invoke Decision Service

- Define Flow
 - Create Rule flow
 - Define the flow
- Deploy
 - Configure Corticon Server
 - Deploy Rule Flow to Server



OpenEdge – Corticon

Define Schema

Create Rules

Deploy

Invoke Decision Service

■ Invoke Decision Service

- ABL API

- Connect
- IsDecisionService
- InvokeService
- GetMsgs
- Disconnect

```
oOptions = NEW JsonObject().
oOptions:Add('URL', 'http://localhost:8980').
oParams = NEW RulesServerConnectionParameters(oOptions).
oConnection = NEW RulesServerConnection(oParams).
dVersion = 1.0.
cServiceName = 'testDemo'.

TEMP-TABLE Transanction:WRITE-JSON("file","before.json", TRUE).

decisionService = NEW DecisionService(oConnection, cServiceName, dVersion).

hAppData = DATASET dsCCard:HANDLE.
decisionService:InvokeService(INPUT-OUTPUT DATASET-HANDLE hAppData).
```

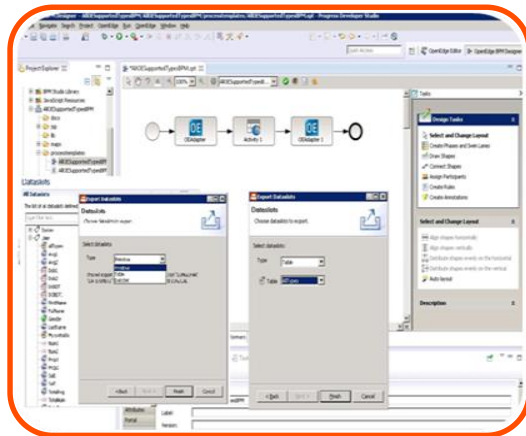
OpenEdge BPM – Corticon

PROGRESS
EXCHANGE 2014

OpenEdge BPM – Corticon

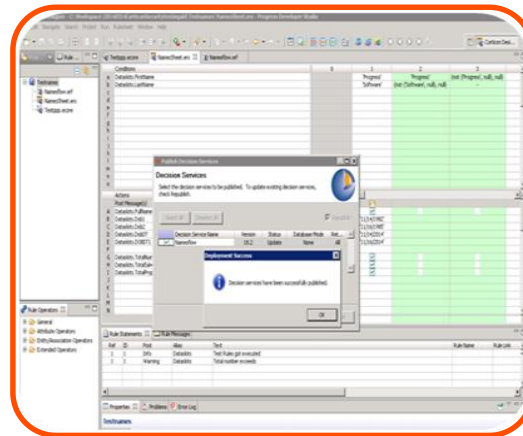
Define Dataslots

Export Schema from Dataslots and Import it as Vocabulary



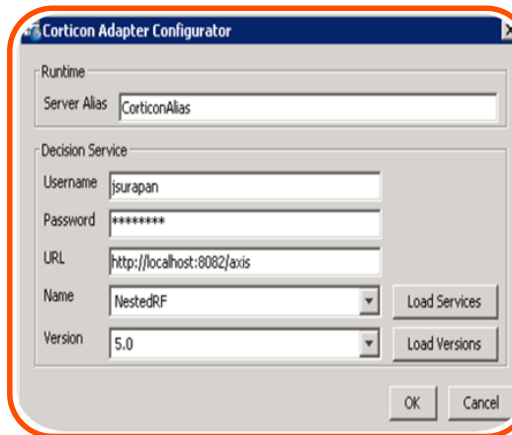
Model & Deploy Business Rules

Create Business Rules and Deploy



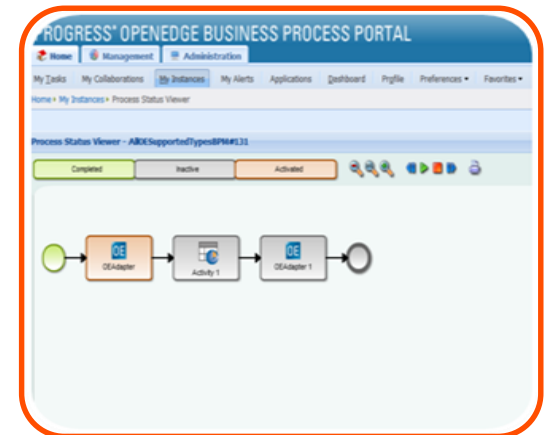
Configure Corticon Adapter

Configure Corticon Adapter



Invoke Decision Service

Invoke the adapter from Business Process



OpenEdge BPM – Corticon

Define Dataslots

Model & Deploy
Business Rules

Configure Corticon
Adapter

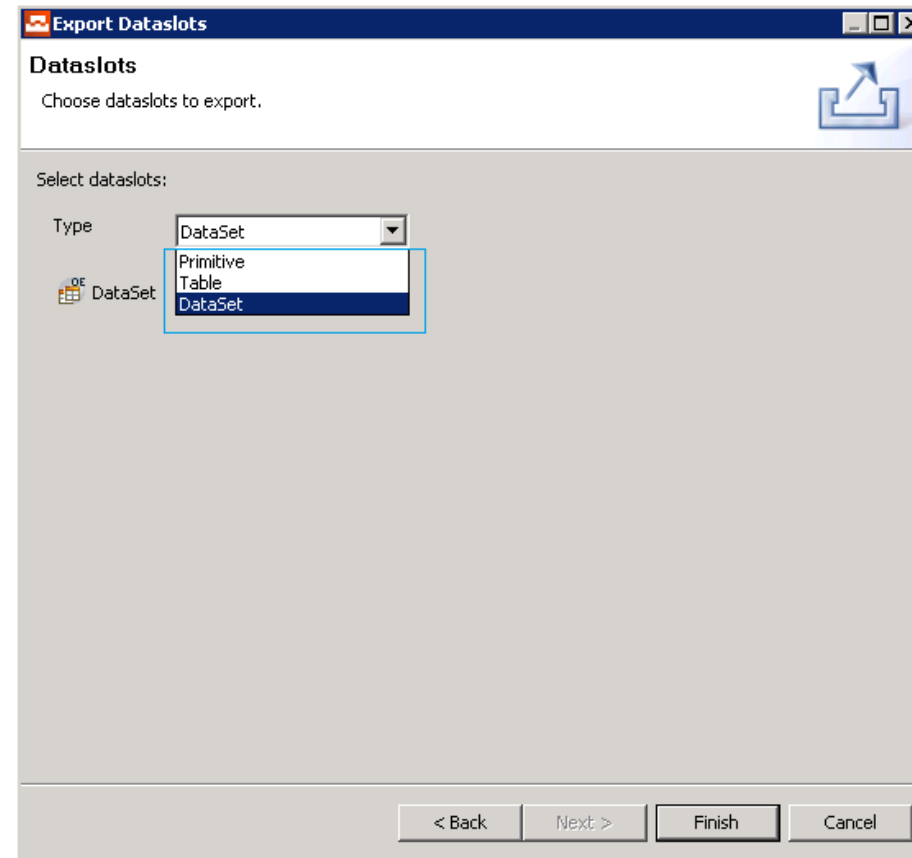
Invoke Decision
Service

■ Define Dataslots

- Primitives, Prodatasets and Temp-Table types
- Assign schema definition for Prodatasets and Temp-Table

■ BRVD Export

- Primitives
- Prodatasets
- Temp-Table



OpenEdge BPM – Corticon

Define Dataslots

Model & Deploy
Business Rules

Configure Corticon
Adapter

Invoke Decision
Service

■ Corticon studio

- Create Corticon Project
- Import BRVD
- Create Rule sheet and model rules
- Define Rule flow using the Rule sheet

■ Corticon server

- Deploy the modeled Rule flow

The screenshot displays the Corticon Studio interface. The top pane shows a rule sheet with conditions and actions. The bottom pane shows a log of rule messages.

Conditions	0	1	2	3
a CCDetails.relation1.Amount<CCDetails.Limit		T	T	-
b CCDetails.ExpiryDate>CCDetails.relation1.ExpiryDate		T	-	-
c CCDetails.HolderName<>CCDetails.relation1.Name		T	-	-
d				
e CCDetails.CCNumber		-	-	1111
f				
g				
h				
i				
j				
k				
l				
m				

Actions	0	1	2	3
A Post Message(s)				
B CCDetails.relation1.Result		T	T	F
C CCDetails.relation1.ResMessage				
D Transaction.new[Amount=2000.00,CCNumber=4444333...				
E Transaction.new[Amount=3000.00,CCNumber=5555666...				
F				
G				
H				
I				
J				
K				
L				
M				

Ref	ID	Post	Alias	Text
2		Info	CCDetails	New Records got inserted
2		Warning	CCDetails	Test Record
3		Violation	CCDetails	Transaction Failed

OpenEdge BPM – Corticon



- In BPM studio
 - Model BPM process
 - Add Corticon adapter
- In Corticon Adapter
 - Username & Password (If secured)
 - Server URL
 - Decision Service name
 - Decision Service version
 - Define dataslot mapping for either Primitive/Prodataset/Temp-Table types

Corticon Adapter Configurator

Runtime

Server Alias: CorticonAlias

Decision Service

Username: jsurapan

Password: *****

URL: http://localhost:8082/axis

Name: NestedRF

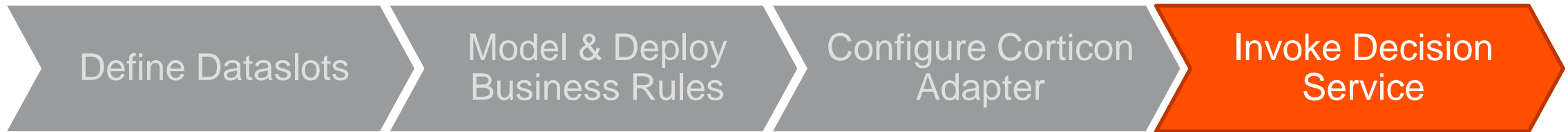
Version: 5.0

Load Services

Load Versions

OK Cancel

OpenEdge BPM – Corticon



- Deploy the Business Process
- In Portal
 - Instantiate the process
 - Invoke decision service using Corticon Adapter

CCDetails						
Transaction						
TransactionID	CCNumber	Name	ExpiryDate	Amount	Result	ResMessage
410	1111	At Burger King	Aug 10 2014	100	true	Transaction Successful
123	4444333322221111	NewRecord	Aug 08 2024	2000	true	SuccessfulTransaction
13	5555666677778888	NewRecord	Aug 08 2020	3000	true	NewSuccessfulTransaction
Page 1 of 1						

RuleMessages				
Severity	MessageText	TableName	DataKeyField	DataKeyValue
Info	New Records got inserted	CCDetails	CCNumber	1111
Warning	Test Record	CCDetails	CCNumber	1111
Page 1 of 1				



TDI.TEXAS.GOV
TEXAS DEPARTMENT OF INSURANCE

“Corticon has enabled TDI to automate far more of the claims process than we ever thought possible.”

— Scott Ashworth, Solutions Architect

CHALLENGE

- Thousands of claims from thousands of employers
- Manual, error-prone process
- High fraud rates

SOLUTION

- **Progress Corticon** BRMS to ensure business analysts manage rules, logical consistency, and integrate with existing BPM solution

BENEFIT

- 50% reduction in claims processing cost
- 80% reduction in time to close
- 80% leakage reduction
- 50% faster changes

“Business agility was a key criterion and Corticon was rated best at enabling fast and accurate changes to our processes.”

– Steve Iddings, Director of Applications Integration

CHALLENGE

- Automate validation, routing, fulfillment of orders from multiple sources
- Increase order processing consistency
- Shrink long fulfillment lead times
- Reduce time to market for new and modified products

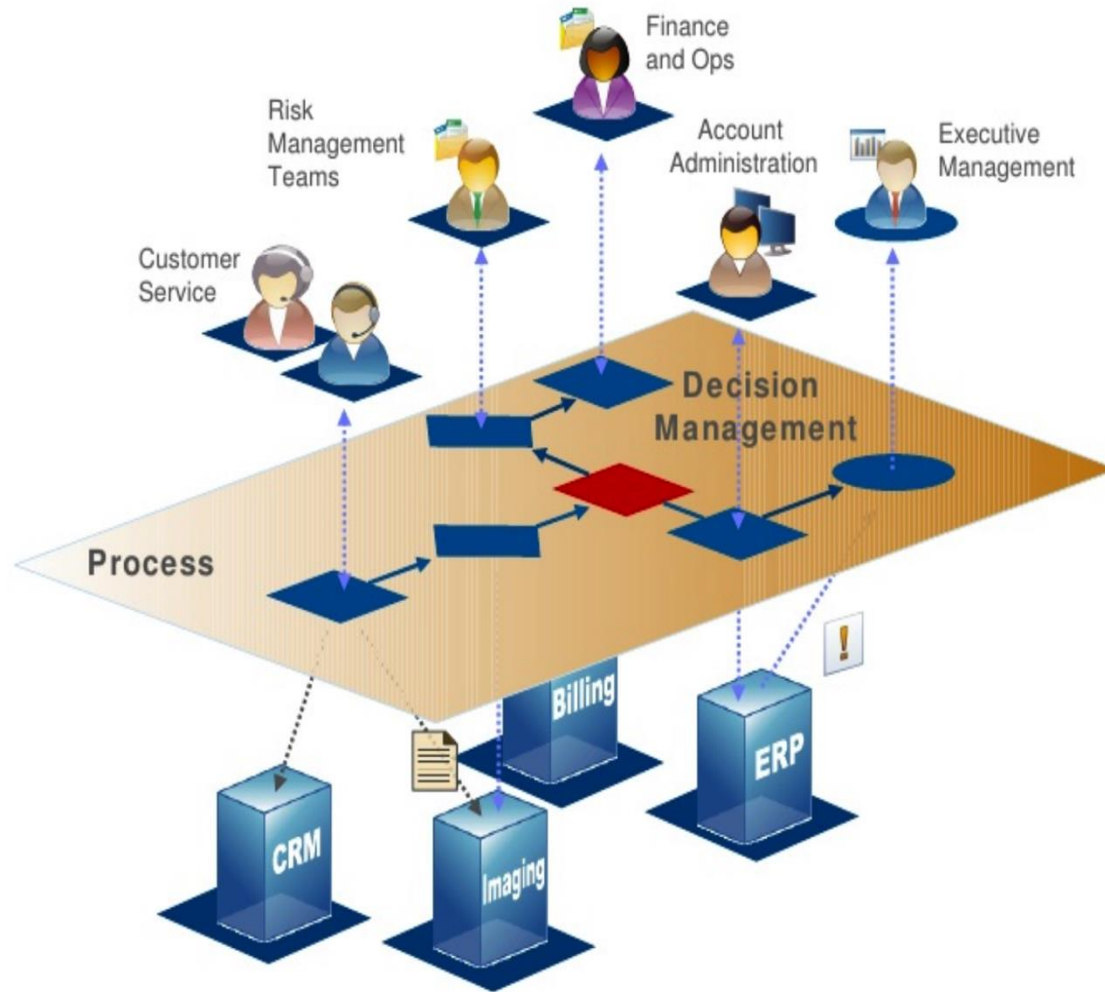
SOLUTION

- **Progress Corticon** BRMS to enable rapid, non-templated rule change

BENEFIT

- Business users now build 90% of business logic without consuming IT resources
- Eliminated 50% of cost of new projects
- Eliminated 80% of cost to change logic
- Empower business users
- Scale to thousands of transactions per second
- Integrate with Intalio BPM

Bring Order to Chaos



- Automate workflow and decision making
- Reduce errors and improve consistency
- Standardize resolution across geographies
- Leverage existing systems and data
- Monitor for business events and initiate actions
- Real-time visibility and process control

Q&A

Your Feedback Matters

Best Tweets

2 Winners get a GoPro Hero 4 Camera worth USD 399 each!

#APJSPARK



Take 10 Surveys

2 Winners get a Microsoft Band worth USD 199 each!

Take 10 surveys and stand a chance in the lucky draw!

bit.do/apjspark



